



**POTTER  
ROEMER**  
LIFE SAFETY EQUIPMENT

Dear Valued End User:

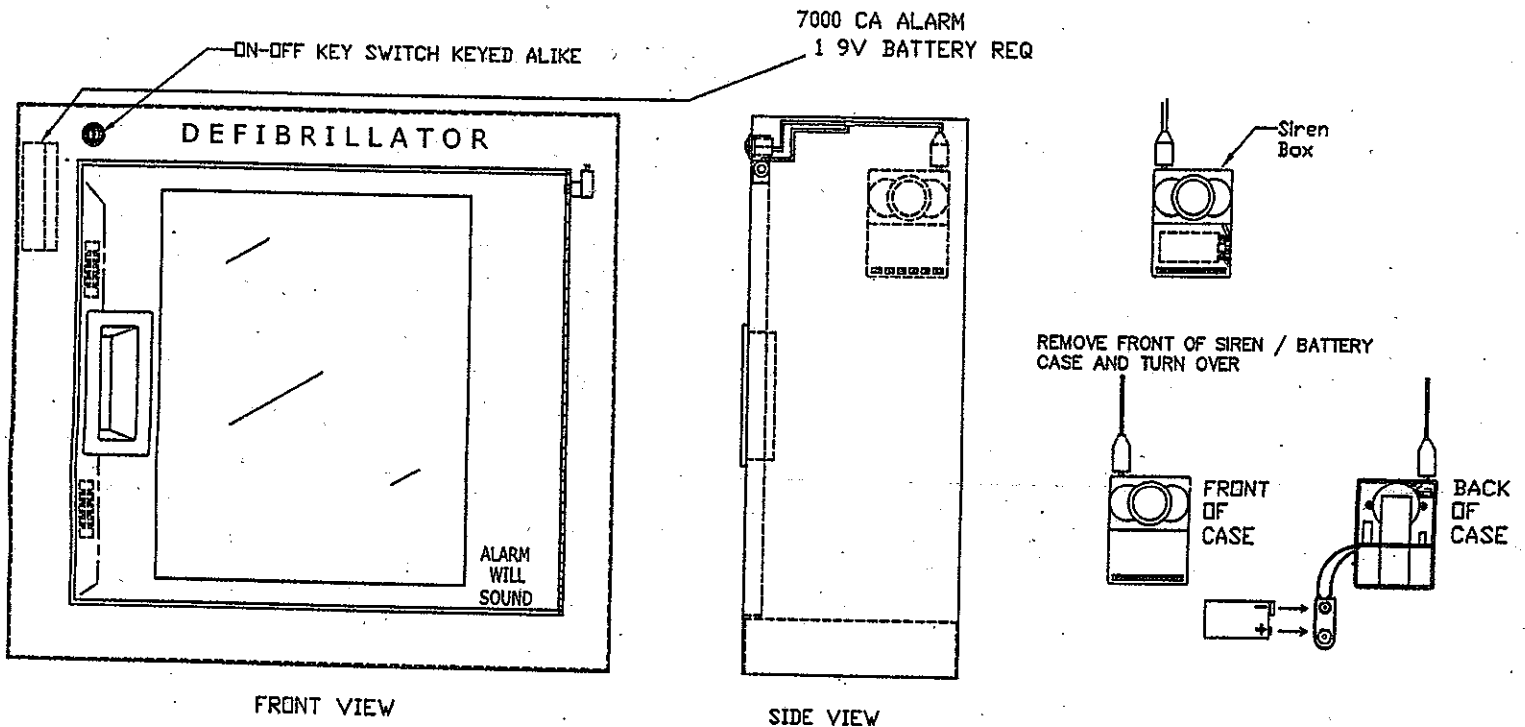
Congratulations! You have purchased one of the finest life-safety cabinets on the market today. Designed specifically to accommodate an automatic external defibrillator ( AED ). It will give you years of service with little, or no maintenance. There are, however, a few important things you will need to know:

- One 9-volt battery is required to power the alarm. We recommend Energizer Titanium Alkaline batteries for best results.
- While most battery manufacturers claim shelf lives of (5) years or more, we recommend these batteries be replaced annually, even if the alarm has not been activated.
- The cabinet is warranted against defects in original materials and workmanship for a period of (5) years from date of shipment from the factory. The alarm and its components are warranted for one year from date of shipment. (Batteries are excluded from this warranty.)

Thank you for your confidence in our product. Should any further questions arise, please feel free to call the Customer Service technical support phone number: (800) 366-3473 Ext. 5790

## Basic Philips Defibrillator Cabinet

Philips Part Number 989803136531



NOTE: Remove shipping tape strip from front of siren / battery case and discard.

1. Insert key provided into on-off switch and turn counter-clockwise to 12 O'Clock to ensure alarm is disarmed.
2. Open cabinet and locate siren / battery case.
3. Grip battery case and push down on front top side and pull front portion away from battery case backing holder. (backing holder will remain fixed to inside of cabinet.)
4. With plug remaining in the top of the battery case, turn the case over and note battery cavity and connectors for (1) 9 volt alkaline battery. (If replacing a spent battery, disconnect it from the connectors and discard appropriately.)
5. Connect a fresh 9 volt alkaline battery to connectors, and place battery into case cavity. Now snap battery case back into case backing holder.
6. Close door and arm the cabinet alarm using key provided. (Turn key to 3 O'Clock position to set alarm to the armed or 'On' Position.

NOTE: Plug must remain in siren battery case when placing battery, or siren will sound.